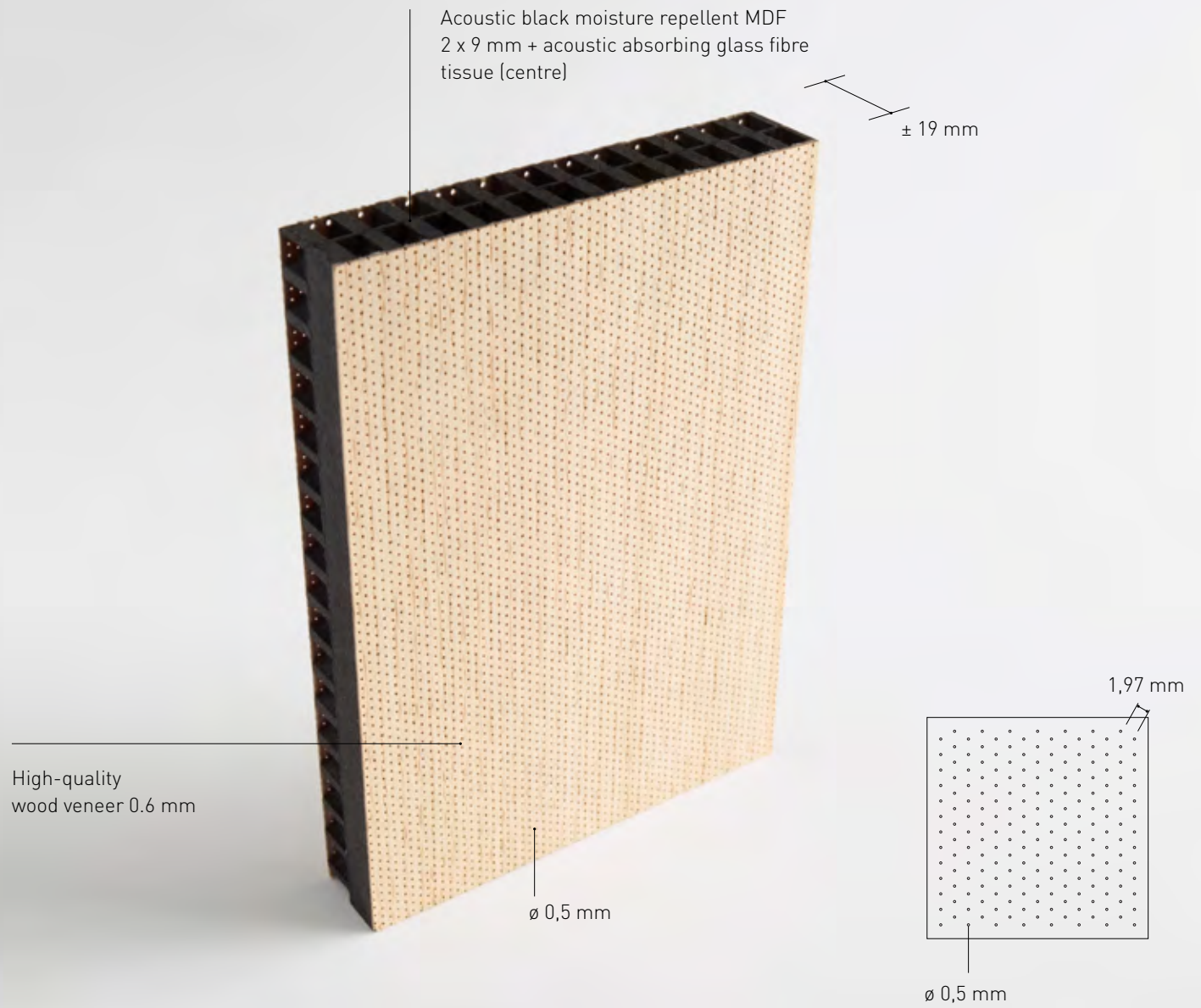


# PRINT ACOUSTICS

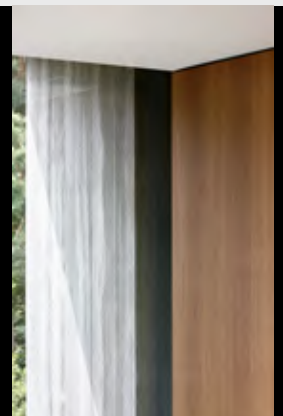
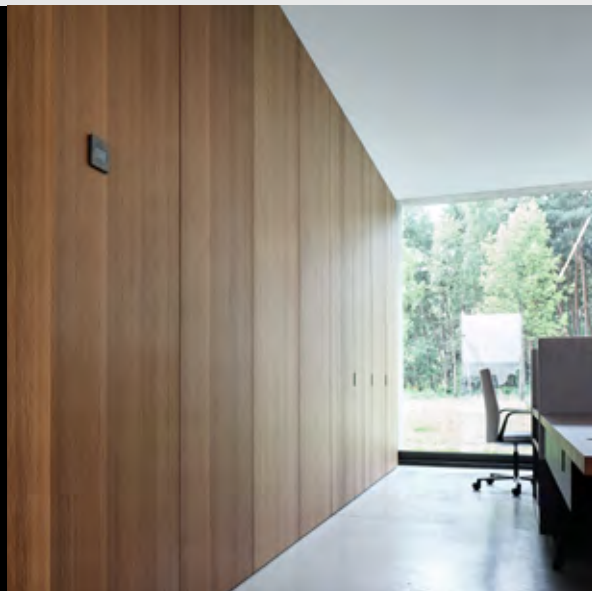
your silent partner



ACOUSTIC — ARCHITECTURAL — AMAZING



**INSTALLATION** see page 87





MICRO/NANO

### MATERIAL COMPOSITION

**Top layer** High-quality wood veneer 0.6 mm / CPL white  
**Core** Acoustic black moisture repellent MDF 2 x 9 mm + acoustic absorbing glass fibre tissue (centre)  
**Backing** Backing veneer 0,6 mm/ CPL backing

**WEIGHT** 11 kg/m<sup>2</sup>

### PERFORATION

Type N with top layer perforations of 5.8%, core perforations of 44.2%: provided with perforated top layer and backing with nano perforations with a diameter of 0.5 mm across the entire surface area (diagonally, 1.97/1.97/0.5 mm) in combination with 2 x perforated acoustic core (provided with a full MDF of 55 mm and a perforated zone in the core [linear, 8/8/6 mm]) and acoustic absorbing glass fibre tissue (centre)

### STD. MEASUREMENTS FULL PANEL

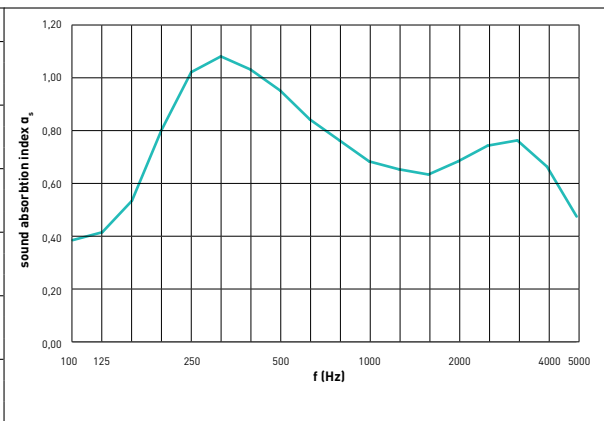
(square-sawn)  
 3000x1200x±19 mm (veneer)  
 (composition of full plate, see page 62)

### OPTIONS

**Made-to-measure** on request  
**Cupboard door fronts** on request (see page 76)  
**Cladding panel** on request (see page 81)  
**Flexible elements** on request (see page 80)  
**Top layer** veneer lacquer or  
 CPL white or color 1 layer lacquer  
**Core** Acoustic black moisture repellent MDF or black fire retardant MDF (European fire class B)

TEST SET-UP IN LABORATORY:  
**TOTAL THICKNESS WALLS**  
**89 mm**

f(Hz)	T1 (s)	T2 (s)	$\alpha_s$
100	13,46	5,56	0,39
125	<b>9,79</b>	<b>4,68</b>	<b>0,42</b>
150	8,61	3,84	0,54
200	9,76	3,13	0,81
250	<b>9,67</b>	<b>2,64</b>	<b>1,03</b>
315	9,62	2,53	1,09
400	9,24	2,59	1,04
500	<b>9,26</b>	<b>2,75</b>	<b>0,96</b>
630	9,87	3,06	0,85
800	9,55	3,27	0,77
1000	<b>9,54</b>	<b>3,47</b>	<b>0,69</b>
1250	8,85	3,47	0,66
1600	7,69	3,33	0,64
2000	<b>6,64</b>	<b>3,02</b>	<b>0,69</b>
2500	5,39	2,62	0,75
3150	4,35	2,33	0,77
4000	<b>3,30</b>	<b>2,13</b>	<b>0,67</b>
5000	2,52	1,98	0,48

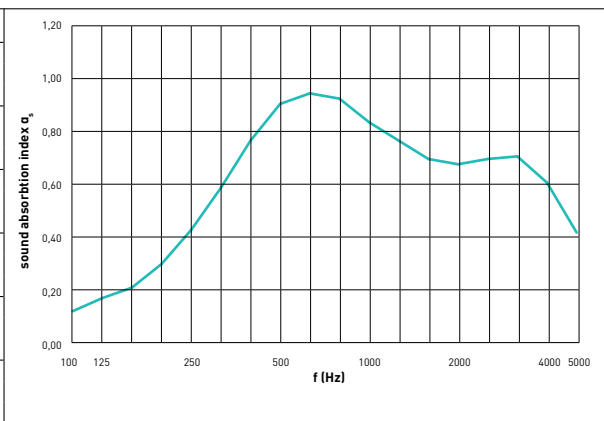


f(Hz)	$\alpha_p$
125	0,45
250	1,00
500	0,95
1000	0,70
2000	0,70
4000	0,65

Total thickness	% perfo top layer	% perfo core	$\alpha_w$	f(Hz)	Sound class	NRC	SAA
<b>89 mm</b>	5,8%	44,2%	<b>0,75</b>	L	C	0,85	0,83
<b>Installation</b> Mounted on a wooden frame with a thickness of 70 mm, filled with 50 mm of mineral wool with a density of 40 kg/m <sup>3</sup> .							
Values according to reverberation room test EN ISO 354:2003 - EN ISO 11654:1997							

TEST SET-UP IN LABORATORY:  
**TOTAL THICKNESS WALLS**  
**39 mm**

f(Hz)	T1 (s)	T2 (s)	$\alpha_s$
100	11,79	8,48	0,12
125	<b>11,81</b>	<b>7,65</b>	<b>0,17</b>
160	9,25	6,11	0,21
200	9,54	5,40	0,30
250	<b>9,96</b>	<b>4,66</b>	<b>0,43</b>
315	9,37	3,78	0,59
400	8,95	3,14	0,77
500	<b>9,11</b>	<b>2,82</b>	<b>0,91</b>
630	9,94	2,83	0,95
800	9,81	2,85	0,93
1000	<b>9,53</b>	<b>3,03</b>	<b>0,84</b>
1250	8,81	3,14	0,77
1600	7,65	3,13	0,70
2000	<b>6,59</b>	<b>2,98</b>	<b>0,68</b>
2500	5,35	2,67	0,70
3150	4,21	2,33	0,71
4000	<b>3,20</b>	<b>2,10</b>	<b>0,61</b>
5000	2,45	1,90	0,42



f(Hz)	$\alpha_p$
125	0,15
250	0,45
500	0,90
1000	0,85
2000	0,70
4000	0,60

Total thickness	% perfo top layer	% perfo core	$\alpha_w$	f(Hz)	Sound class	NRC	SAA
<b>39 mm</b>	5,8%	44,2%	<b>0,70</b>		C	0,75	0,71
<b>Installation</b> Mounted on a wooden frame with a thickness of 20 mm, filled with 20 mm PRIMAWOOL of 22,5 kg/m <sup>3</sup> .							
Values according to reverberation room test EN ISO 354:2003 - EN ISO 11654:1997							

## TYPE B, C HPL, C MX, M, ML, N, NL

Installation on a single or double wooden frame (ctc 640 mm for panels of 1280 mm / ctc 600 mm for panels of 1200 mm) can be done by means of invisible planks. These invisible planks are screwed onto the back of the panels and the acoustic absorbing panels are then hung onto the frame.

The openings of the wooden framework must be filled with a sound absorbing material (e.g. Rockwool or Primawool).

The four sides of the panel must always be supported by the framework. The short sides of two panels are mounted next to each other to a common underlying frame with a distance of 2 to 3 mm between them.

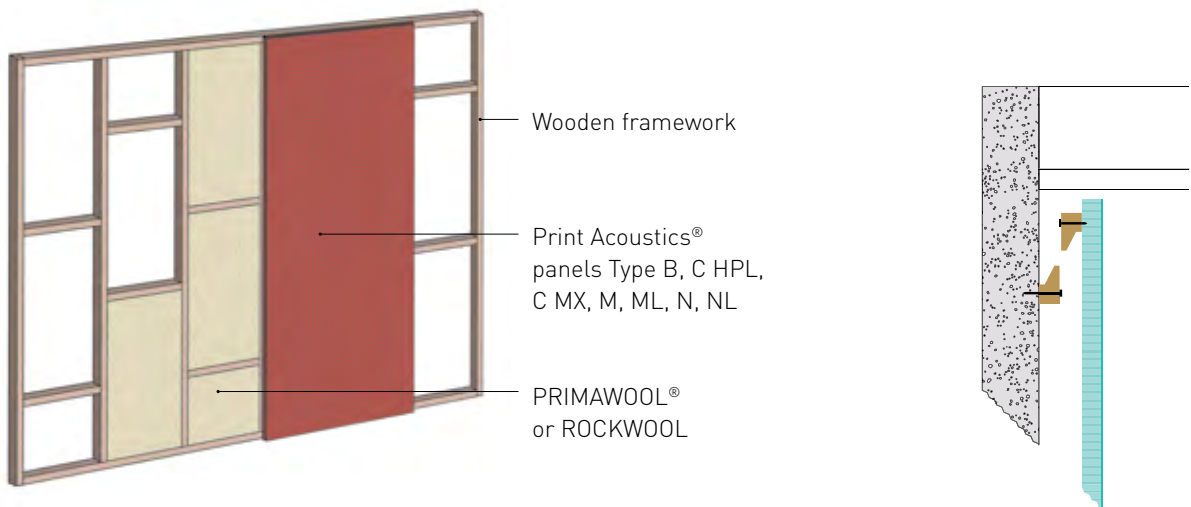
The short sides of two panels are mounted to a common underlying frame with a distance of 2 to 3 mm between them.

We advise you to leave a space at the top between the panel and the ceiling so as to enable you to join the two elements.

We advise you to leave a space of 2.5 mm per meter in height and width in order to allow the construction to expand.

Proposed installation patterns as well as our guidelines to store the panels can be found on Page 88. Our guidelines for corner and plinth details can be found on Page 90.

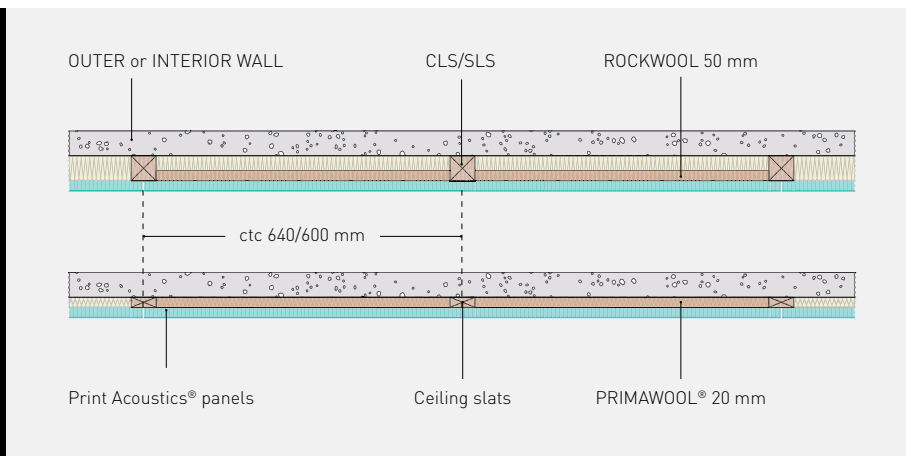
On request you can obtain specific installation guidelines and certificates for: walls with an expected increased impact (sports rooms, party rooms, etc.) according to standard ETAG 003 and EN 13,964 and for ceiling installation.



**TEST SET-UP  
IN LABORATORY:**

**TOTAL THICKNESS  
WALLS**  
88/90 mm

**TOTAL THICKNESS  
WALLS**  
38/40 mm





Print Acoustics is a TRIPLACO brand

Generaal Deprezstraat 2, 8530 Harelbeke - België

T +32 56 22 62 17 | F +32 56 22 98 15 | [info@printacoustics.be](mailto:info@printacoustics.be) | [www.printacoustics.be](http://www.printacoustics.be)