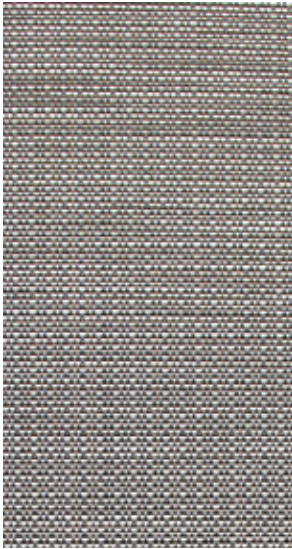


# TYPE I (door 18 mm)

**PATENT  
PENDING**



**THICKNESS** +-18 mm

**WEIGHT** 11 kg/m<sup>2</sup>

**MATERIAL COMPOSITION**

- Core of 16 mm in MDF
- High-quality woven vinyl of Ntgrate®

**STD. MEASUREMENTS**

Made-to-measure closet doors and sliding doors.

**PERFORATION**

Woven vinyl. Invisible design.

**TOP LAYER**

Ntgrate® woven vinyl 1 mm.

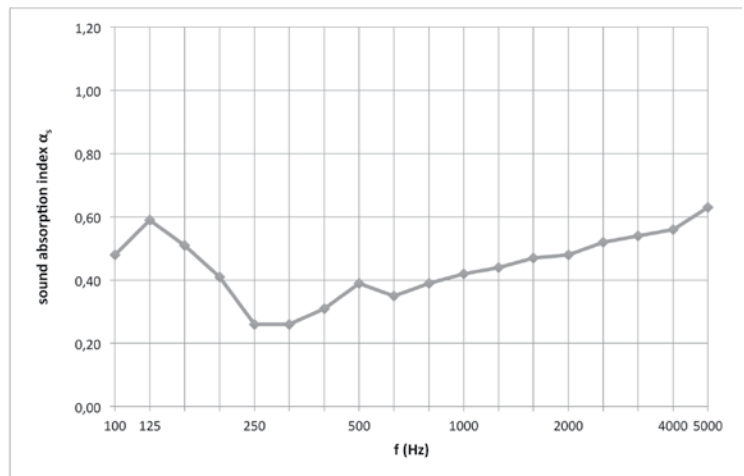
**CORE**

Black waterresistant MDF.  
On request: standard MDF, red or black flame retardant MDF (B-s1-d0).

TEST SETUP  
IN LAB:  
CLOSET DOORS

DEPTH  
500 mm

| f(Hz) | T1 (s)       | T2 (s)      | α <sub>s</sub> |
|-------|--------------|-------------|----------------|
| 50    |              |             |                |
| 63    |              |             |                |
| 80    |              |             |                |
| 100   | 12,65        | 4,87        | 0,48           |
| 125   | <b>10,07</b> | <b>3,90</b> | <b>0,59</b>    |
| 160   | 9,14         | 4,10        | 0,51           |
| 200   | 9,60         | 4,71        | 0,41           |
| 250   | <b>9,25</b>  | <b>5,68</b> | <b>0,26</b>    |
| 315   | 9,29         | 5,72        | 0,26           |
| 400   | 8,86         | 5,15        | 0,31           |
| 500   | <b>9,11</b>  | <b>4,70</b> | <b>0,39</b>    |
| 630   | 9,79         | 5,14        | 0,35           |
| 800   | 9,72         | 4,84        | 0,39           |
| 1000  | <b>9,53</b>  | <b>4,66</b> | <b>0,42</b>    |
| 1250  | 8,69         | 4,35        | 0,44           |
| 1600  | 7,49         | 3,93        | 0,47           |
| 2000  | <b>6,53</b>  | <b>3,62</b> | <b>0,48</b>    |
| 2500  | 5,45         | 3,20        | 0,52           |
| 3150  | 4,40         | 2,79        | 0,54           |
| 4000  | <b>3,51</b>  | <b>2,41</b> | <b>0,56</b>    |
| 5000  | 2,69         | 1,97        | 0,63           |



| f(Hz) | α <sub>p</sub> |
|-------|----------------|
| 125   | 0,55           |
| 250   | 0,30           |
| 500   | 0,35           |
| 1000  | 0,40           |
| 2000  | 0,50           |
| 4000  | 0,60           |

aw = 0,40 ( H )  
acoustical absorption class : D

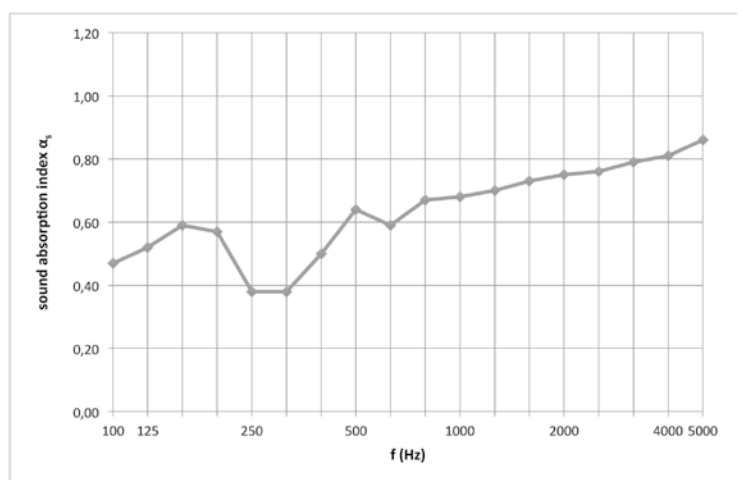
Type I

Mounted on a wooden frame with a height of 500 mm (= simulation of empty closet).

TEST SETUP  
IN LAB:  
CLOSET DOORS

DEPTH  
500 mm

| f(Hz) | T1 (s)       | T2 (s)      | α <sub>s</sub> |
|-------|--------------|-------------|----------------|
| 50    |              |             |                |
| 63    |              |             |                |
| 80    |              |             |                |
| 100   | 12,93        | 6,70        | 0,47           |
| 125   | <b>13,05</b> | <b>6,61</b> | <b>0,52</b>    |
| 160   | 11,51        | 4,96        | 0,59           |
| 200   | 11,84        | 4,25        | 0,57           |
| 250   | <b>10,89</b> | <b>3,66</b> | <b>0,38</b>    |
| 315   | 11,12        | 3,17        | 0,38           |
| 400   | 10,66        | 3,06        | 0,50           |
| 500   | <b>10,86</b> | <b>3,23</b> | <b>0,64</b>    |
| 630   | 11,80        | 3,69        | 0,59           |
| 800   | 11,94        | 3,99        | 0,67           |
| 1000  | <b>11,58</b> | <b>4,33</b> | <b>0,68</b>    |
| 1250  | 10,49        | 4,32        | 0,70           |
| 1600  | 8,98         | 4,13        | 0,73           |
| 2000  | <b>7,67</b>  | <b>3,78</b> | <b>0,75</b>    |
| 2500  | 6,13         | 3,32        | 0,76           |
| 3150  | 4,79         | 2,75        | 0,79           |
| 4000  | <b>3,70</b>  | <b>2,23</b> | <b>0,81</b>    |
| 5000  | 2,74         | 1,82        | 0,86           |



| f(Hz) | α <sub>p</sub> |
|-------|----------------|
| 125   | 0,40           |
| 250   | 0,85           |
| 500   | 0,95           |
| 1000  | 0,65           |
| 2000  | 0,60           |
| 4000  | 0,80           |

aw = 0,65 ( LMH )  
acoustical absorption class : C

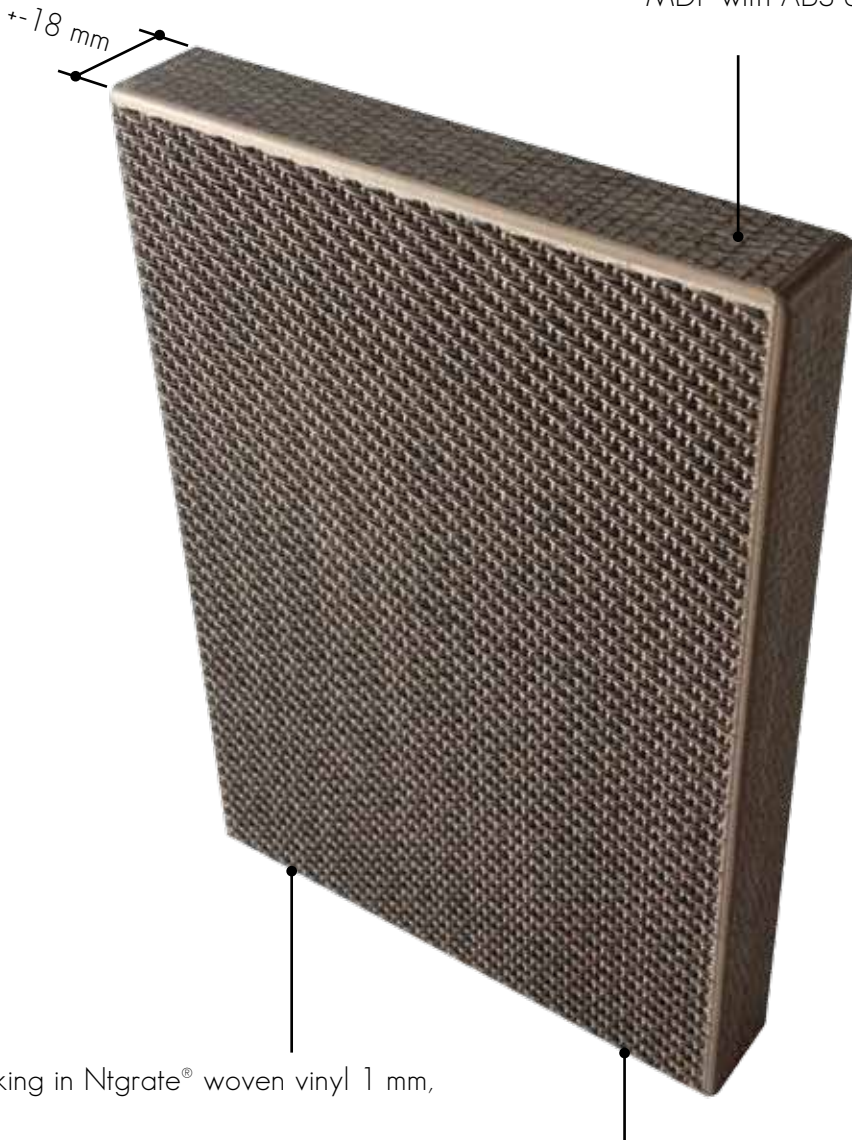
Type I

Mounted on a wooden frame with a height of 500 mm (= simulation of empty closet).  
PRIMAWOOL stuck with spun fabric side on the back of the interior of the closet.

# TYPE I (door 18 mm)

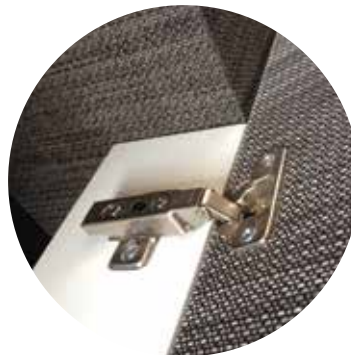


A core of 16 mm in black waterproof MDF with ABS edge band.



Top layer & backing in Ntgrate® woven vinyl 1 mm, invisible design.

Made-to-measure for closet doors and sliding doors.



**PATENT PENDING**

| % perfo           | total thickness                    | $\alpha_w$ | NRC*<br><small>see page 7</small> | SAA**<br><small>see page 7</small> |
|-------------------|------------------------------------|------------|-----------------------------------|------------------------------------|
| Technical textile | 500mm                              | 0.40       | 0.40                              | 0.39                               |
| PVC               | 500mm<br><small>+PRIMAWOOL</small> | 0.65       | 0.60                              | 0.61                               |

**MADE-TO-MEASURE CLOSET DOORS ON REQUEST**

TYPE G  
DEVOLDER ARCHITECTS



TYPE S  
IDEWE LOUVAIN



TYPE S  
IDEWE LOUVAIN



TYPE D6  
VANBECELAERE & HAUSPIE ARCHITECTS



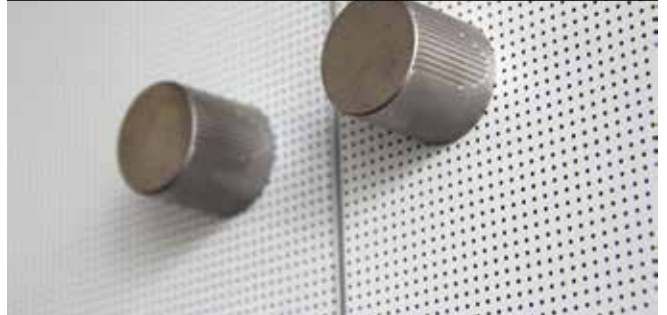


# MADE-TO-MEASURE CLOSET DOORS ON REQUEST

TYPE M with Magnetico strip  
AAVO ARCHITECTS



TYPE M  
AAVO ARCHITECTS



TYPE D<sub>r</sub>  
VANBECELAERE & HAUSPIE ARCHITECTS



TYPE M  
AAVO ARCHITECTS



TYPE M  
BURO II & ARCHI+I



TYPE M  
BURO II & ARCHI+I



TYPE D<sub>b</sub>  
BURO II & ARCHI+I



TYPE I  
ARCHITECT@WORK 2015

